



teXXmo

FEATURING
QUADPAD



QUADPAD 1

MOBILITY MEETS DURABILITY

QUADURO

TOOLS FOR PROFESSIONALS



The Quadpad 1 is a slate tablet PC, and its capability is based on an architecture featuring mainstream operating systems, allowing users to run familiar applications in various surroundings at any time.

Installation on a LAN, WAN and WPAN via Bluetooth and WIFI enable connectivity to other systems on the network. Sync with POS systems; use it as a VoIP tool, a control panel for automation system, a PC based diagnostics tool in the automotive industry or simply a presentation tool the possibilities are endless.

Enhance the learning process for students, motivate and build enthusiasm by replacing conventional books with the cost effective windows based touch screen Quadpad 1 alternative. Offer a range of award winning contents included interactive multimedia learning resources. Cut costs associated with reporting and administration as well as the paperless school concept.

The Quadpad 1 is a semi rugged device built within its small, thin and light platform design. The 21,34 cm (8.4") Touch Screen LCD display and power-efficient technologies enable long battery life to extend productivity of the unit. The combination of such facilities makes the Quadpad 1 an ideal cost effective tool in many vertical industries.

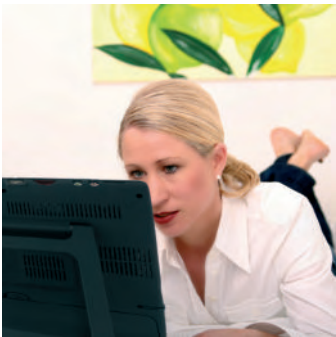


AUTOMOTIVE

- PC based Diagnostics.
- MOT station tool employing its remote usability and wireless capabilities.
- Semi rugged design ideal for the workshop environment.

EDUCATION

- GCSE learning tool.
- E-learning and adult education tool as an Interactive knowledge base.
- XP based machine, enabling use of all familiar software products and applications.
- Cost effective tool.



COMMUNICATION

- Voice over Internet communication via Wi-Fi using handsfree speaker or headphones.
- 3G compatible; use as a GPS Satellite navigation system using in car.
- Fast Mobile browsing via 3G PCMCIA card.

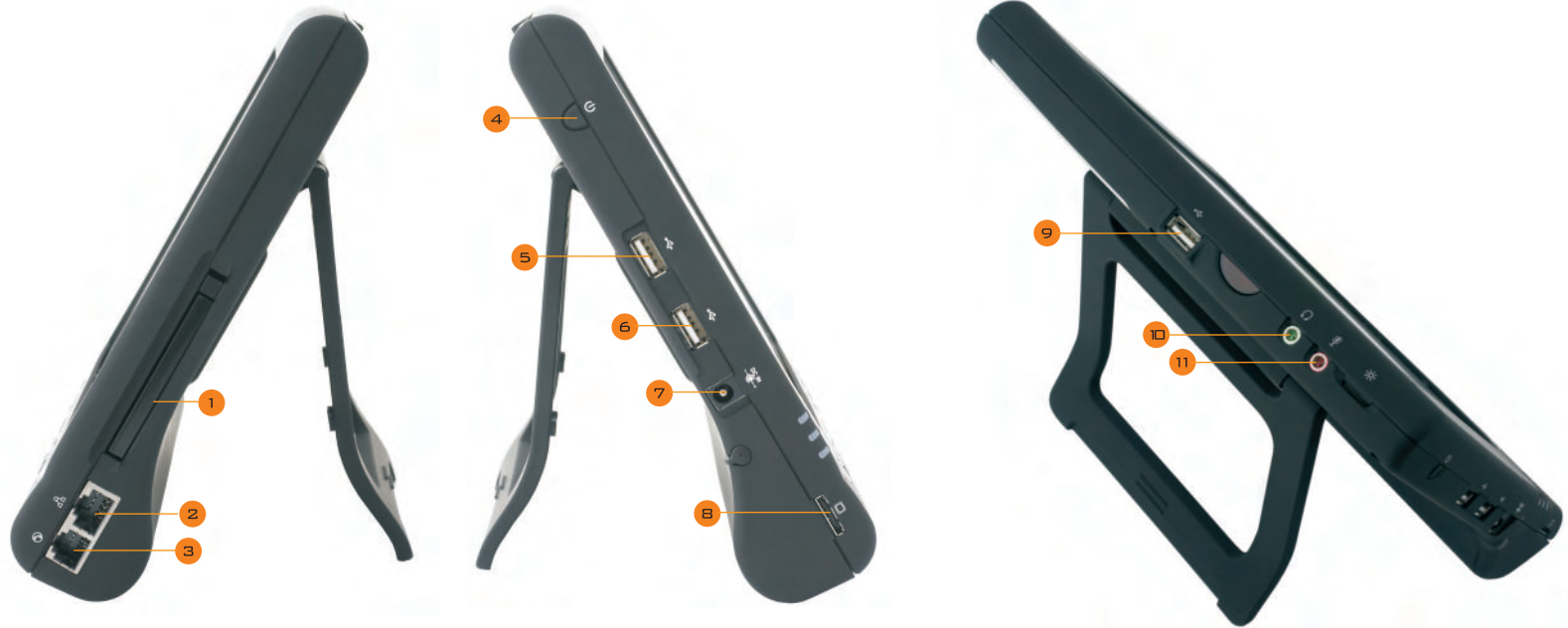
WIDER INDUSTRY

- Versatile Mobile Presentation tool.
- Off-site and out door use in Marketing, data collection and field studies.
- Access data and other resources through wireless access which allows you to toggle between WAN, WLAN and Bluetooth®.
- Jotter and post-it note applications - Voice Memo taking.
- Control panel and system interface device.



INPUT & OUTPUT

- 1 : PCMCIA Slot
- 2 : Modem Port
- 3 : Ethernet Port
- 4 : Power Button
- 5 : USB Port
- 6 : USB Port
- 7 : DC In Port
- 8 : Serial Port Converter
- 9 : USB Port
- 10 : Headphone Jack
- 11 : Microphone Jack



OPTIONAL EXTRAS



RUBBER BUMP CASE

The extra support rubber bump case protects the Quadpad 1 from everyday knocks and bumps, and is ideal for use in garages and workshops. The cover includes a neck strap, which allows the Quadpad 1 to rest comfortably during use. Color: Black

12V CAR CHARGER

Operate your Quadpad 1 and charge your battery while traveling. The Quadpad 1 Car Adapter plugs into a standard automobile cigarette lighter. Built-in power level filtering and short circuit protection keep your tablet safe from power fluctuations and unexpected power surges. Color: Black

AC POWER PACK

Avoid forgetting your AC Power Adapter, AC plug and power cord when traveling! A second AC Power Pack provides the convenience of working from multiple locations without the fuss of packing up the power sources for your Quadpad 1 PC. Color: Black

HOLDER

A versatile, executive holder arm is a perfect vibration free mount solution for the Quadpad 1. It's extendible arm and swivel mechanism allows for perfect and optimum viewing position.

STYLUS PEN

Larger diameter provides improved ergonomics and makes writing easier with less user fatigue providing an experience that is closer to a standard pencil. Colour: Black



PRODUCT SPECIFICATION

Memory	512 MB DDR RAM
Processor	Via EDEN 1 GB
System	Wizpro Bios APM 1.2
Communication	Wireless Wifi, 802.11
Bluetooth	Integrated
Modem	56 Kbps V.92 MDC
Sound	LAN Realtech 10/100 Base-T
Hard Drive	AC-97 Audio on board, 16 bit stereo
Operating System	60 GB
Display	Windows® XP Home Edition
Battery	21,34 cm (8.4") Touch Screen TFT
Expansion I/O	Removable Li-Ion Standard Battery Pack (up to 3 hours)
	3 x USB Ports
	1 IrDA Port
	1 Earphone Jack
	1 Microphone Jack
	1 Mini VGA output Port
	10 Hot Key Quick Access Button
	4 Directional Buttons
Weight	1.19 kg (with battery)
AC Adapter	Input: AC 100-240 V 50/60 Hz
	Output: DC 16 V, 3.13 A
Dimensions	231 mm x 192 mm x 42 mm

WARRANTY/SUPPORT

teXXmo offers a 12-month warranty on all Quadpad products (except batteries), which are designed with your convenience, timeliness, and business continuity in mind. In the unlikely event that you have a need for warranty repairs, a specially designed local support structure is set in place to ensure minimum downtime of your Quadpad tool.

ONLINE SUPPORT

Technical support is available electronically at www.quadpad.de Included are answers to many commonly asked technical questions.

QUADPAD REPAIR-CENTER GERMANY

In case that your Quadpad tablet PC needs to be repaired, please contact directly the Quadpad Repair Center Germany, which we set up for your convenience. The Quadpad Repair Center Germany will assist you with troubleshooting over the phone. If it's confirmed that there is a hardware failure, you will receive an RMA number for tracking your unit through the repair process. Upon receipt of your portable computer at the Depot, specialist staff will make reasonable efforts to complete the repair and ship your repaired product back to you within three (3) business days. In more complicated cases, the Global Support Center will assist you as well.

© 2009 teXXmo Mobile Solution GmbH. Reproduction in whole or in parts without written permission is prohibited. All rights reserved. Quaduro Systems, Quadpad 1, Quadpad, and their respective logos are trademarks of Dins International Ltd. (UK). "Tools for Professionals" is a servicemark of Dins International Ltd. (UK). Microsoft, Windows are trademarks of Microsoft Corporation. All other trademarks are trademarks of their respective owners.

teXXmo

Mobile Solution GmbH & Co. KG
Otto-Lilienthal-Straße 36
71034 Boeblingen
Germany

Tel.: +49 (0)7031 714 850
Fax: +49 (0)7031 714 849
E-Mail: info@teXXmo.com

FOR MORE INFORMATION PLEASE GO TO:

WWW.QUADPAD.DE